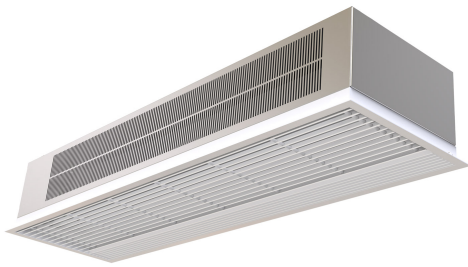


Ipašības



- Pašbalstoša cinkota tērauda plāksnes korpusa konstrukcija, gatavs uzstādīšanai iebūvēšanai piekaramos griestos.
- It has both internal and external fixings. Electrical and electronic connections inside.
- Izplūdes režģis (bez apkopes) izstrādāts ar alumīnija profiliem un izplūdes sprauslu, iebūvēts viena balta rāmja RAL 9016 krāsā. Pēc pieprasījuma ir pieejamas arī citas krāsas.
- Anodētas alumīnija izplūdes lāpstiņas, spārna formas.
- Zema trokšņa savīti šķērsplūsmas ventilatori, vadāmi ar 2 ātrumu ārējo rotora dzinēju.
- "P" type with water heated coil and integrated regulation for ON/OFF or three stages 0-10V proportional valve. "E" tips ar elektriski aizsargātiem elementiem, trīs posmiem ar iebūvētu regulēšanu. "A" tips bez apkures, tikai gaiss.
- Advanced Plug&Play control. Includes: Advanced PRO control with LCD display and integrated thermostat, door contact, 7m and remote control. With integrated functions: door delay (configurable); interface mode; operation, alarm and maintenance warning signals; and multiple digital inputs that modify the air curtain's operation.
- Includes protective varnish for the electronic board and control.
- Optional:
 - Auxiliary temperature sensors that improve air curtain control and increase energy savings.
 - Clever PRO intelligent control (automatic, programmable, ModBus via PLC, timer, etc.) with an additional temperature sensor.

Specifikācijas

50Hz

Modelis	(m³/h)	(m)
RA 1000 A	2,5-3,5	
RA 1500 A	2,5-3,5	
RA 2000 A	2,5-3,5	

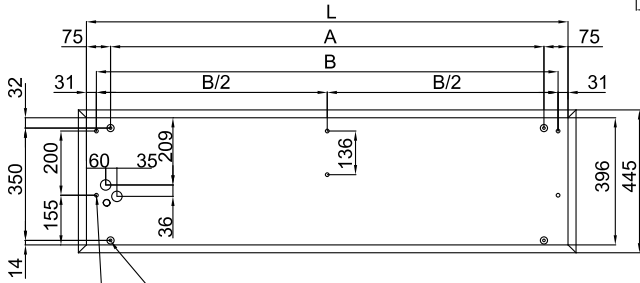
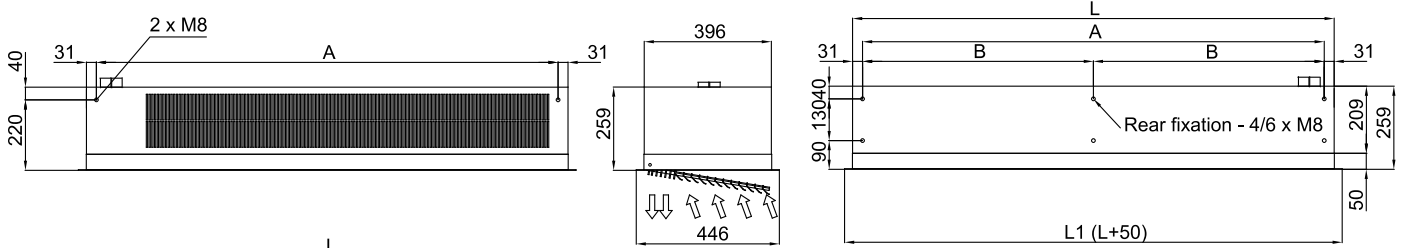
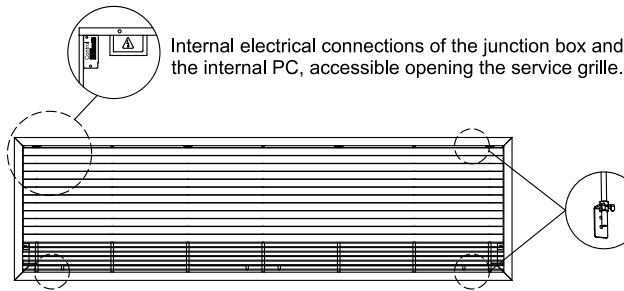
Modelis	(m³/h)	(kW)	(m)
RA 1000 E	2,5-3,5		
RA 1500 E	2,5-3,5		
RA 2000 E	2,5-3,5		

Modelis	(m³/h)	(kW)	(kW)	(m)
RA 1000 P86	2,5-3,5			
RA 1500 P86	2,5-3,5			
RA 2000 P86	2,5-3,5			
RA 1000 P64	2,5-3,5			
RA 1500 P64	2,5-3,5			
RA 2000 P64	2,5-3,5			

60Hz

Modelis	(m³/h)	(m)
RA 1000 A 60Hz	2,5-3,5	
RA 1500 A 60Hz	2,5-3,5	
RA 2000 A 60Hz	2,5-3,5	

Izmeri



Hanging fixation 1 (by default) - 4 x M8 Through-holes for routing the fasteners to the interior.
 Hanging fixation 2 (optional) - 4/6 x M8 Holes for external fastening.

	L	L1	A	B	B/2
RA 1000 A, P, E	1000	1050	850	938	-
RA 1500 A, P, E	1500	1550	1350	1438	-
RA 2000 A, P, E	2000	2050	1850	1938	969